

Wilderness Retreat in the Inyo National Forest

The Great Western Vehicle, a 4th Wheel Buddhist tradition



Getting there:

Bishop California is situated in the Owens Valley, in East central California, on Highway 395 about 260 miles north of San Diego or LA. It is likely to take about 6 hours of driving time to get there from San Francisco, San Diego or LA, 5 hours from Los Vegas, and about 3 hours from Reno. Stop at the Forest Service building in the center of Bishop and get a “dispersed camping permit.” It is free. This should be good for the remainder of the year for anywhere in the Inyo National Forest, and it will include a fire permit.

From Los Vegas take 95 north through Beatty to 266, go west to Big Pine, then north to Bishop. It is about 300 miles (aprox. 5 hours driving).

From Reno take 395 south to Bishop about 200 miles (aprox. 3 hours driving).

We will be camped by McGee Creek in Longley Meadow, off the Buttermilk Rd (7S01), which is a few miles west of Bishop, California on Rt. 168 (W. Line Ave.). Route 168 bisects Bishop and crosses Highway 395 about a mile south of the Forest Service building, so if you came from the south you will want to back track a bit to Rt. 168. Go west on Route 168 a few miles out of Bishop. You will have climbed in elevation about 2,000 feet, and you will pass the local Junior College, keep going until you see Buttermilk road, where you will take a right (go north). Buttermilk road is a well graded dirt road. Drive about a mile until you see a row of telephone poles transecting the Buttermilk road.



Stop at the Forest Service building in the center of Bishop and get a “dispersed camping permit.” It is free. They are at Yaney and Main (Rt. 395)



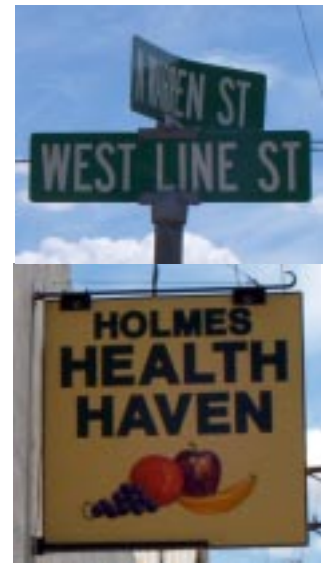
Route 168 bisects Bishop and crosses Highway 395 about a mile south of the Forest Service building. Stop at the healthfood store for provisions. They are just around the corner from the Kava cafe on the way up to camp.



Internet Cafe



Go West on 168 (W Line St)



Buy granola and freeze dried soups



Rt. 168 (W. Line Ave.) to Buttermilk Rd (7S01), which is a few miles west of Bishop



Take the next dirt road you see to the north (a right). It will be rough and uneven, but a two wheel drive vehicle should be able to handle it.





The road will wind around the backside of a couple of hills. Travel on that road for about 1/2 mile until you see a right turn toward the north which would cross the Buttermilk creek. You should see my van parked by the creek.



If your vehicle can cross the creek then continue on down this road until you see a cluster of large cotton woods.

Park here because this is our retreat site.



Longley Meadow campsite

http://f1.pg.photos.yahoo.com/ph/jhanananda/album?.dir=/68bd&.src=ph&.store=&.prodid=&.done=http%3a//f1.pg.photos.yahoo.com/ph/jhanananda/my_photos

The Great Western Vehicle, a 4th Wheel Buddhist tradition



Great Western Vehicle
PO Box 41795
Tucson, AZ 85717-1795
(520) 247-5587
Jhanananda@Yahoo.com
http://groups.yahoo.com/group/Great_Western_Vehicle